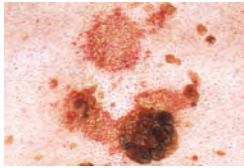


# Sample Cryosurgery Coding for Treatable Lesions using the CryoPen

CryoPen is a registered trademark of CryoPen, Inc. ©Copyright All Rights Reserved • Technical Support: 1-877-246-3955 • www.cryopen.com

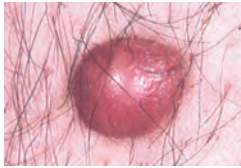
## Benign Lesion

**CPT Code: 17110** (up to 14) or **17111** (15 or more)



### seborrheic keratosis

ICD-9-CM  
702.1- common benign  
702.11- inflamed  
702.19- other



### dermatofibroma

ICD-9-CM  
216- benign neoplasm of skin (site specific)  
216.0- skin of lip and so on



### lentigo

ICD-9-CM  
709.9- congenital  
709.09- juvenile



### molluscum

ICD-9-CM  
078.0-contagiosum



### keloid

ICD-9-CM  
701.4-s car



### warts

ICD-9-CM  
078.10-viral  
078.19-external genital



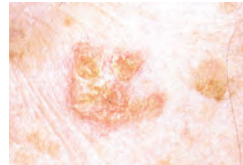
### plantar warts

ICD-9-CM  
078.19-plantar wart  
216.7 neoplasma skin benign (plantar)

## Premalignant Lesion

**CPT Code: 17000** (1st)  
or **17003** (2-14) **17004** (15 or more)

Note: Do not report 17004 in conjunction with 17000-17003



### actinic keratosis

ICD-9-CM  
702.0 actinic keratosis



### condyloma

ICD-9-CM  
078.1-viral warts etc.

## Skin Tags

**CPT Code: 11200** (up to 15) or  
**11201** (each add. 10)

Note: If using 11201-this code is in addition to 11200. List separately



### skin tag

ICD-9-CM  
701.9-unspecified -skin tag  
698.9-ltch  
782.0-disturbance of skin sensation burning or prickling sensation numbness-tingling...

## Malignant Lesion

**CPT Code: 17260**

**trunk, arms, legs lesion diameter 0.5cm or less**

Note: See additional codes  
17261-17266

**CPT Code: 17270**

**scalp, neck, hands, feet, and genitalia diameter 0.5cm or less**

Note: See additional codes 17271-17276

**CPT Code: 17280**

**face, ears, eyelids, nose, lips, mucous membranes diameter 0.5cm or less**

Note: See additional codes  
17281-17286



### non-recurrent basal cell

ICD-9-CM  
173-other malignant neoplasm of skin (site specific)  
173.0-skin of lip  
173.1-eyelid, including canthus  
173.2-skin of ear  
173.3-skin of other and unspecified parts of face  
• cheek, external, chin, eyebrow, forehead, nose, external, temple, and so on

## Destruction Lesion (anus)

**CPT Code: 46900** or **46924** (extensive)

eg, condyloma, papilloma, molluscum contagiosum, herpetic vesicle

## Destruction Lesion (penis)

**CPT Code: 54050** or **54065** (extensive)

eg, condyloma, papilloma, molluscum contagiosum, herpetic vesicle



### molluscum

ICD-9-CM  
078.0-contagiosum



### condyloma

ICD-9-CM  
078.1-viral warts  
078.10-viral wart  
078.11- condyloma acuminatum

## Destruction Lesion (vulva)

**CPT Code: 56501** (simple) **56515** (extensive)

## Destruction Lesion (vaginal)

**CPT Code: 57061** (simple)

This sheet is provided to assist you in determining possible codes for procedures performed and are presented as examples only.

Please visit: [www.aapc.com/icd-10](http://www.aapc.com/icd-10) for more information on the scheduled replacement of ICD-9 w/ICD-10, set for October 1, 2013.

(Visit: [ICD9Data.com](http://ICD9Data.com) for free diagnosis code lookup)

### Other benign ICD-9-CM procedure codes

216.0- lip	222-neoplasm male genital organs
216.3- face	216.5- anus
216.4- neck	216.7- leg
216.5- trunk	

\*Photographs: Robert J. Friedman, M.D., Alfred W. Kopf, M.D., Darrell S. Rigel, M.D. Photographs reproduced courtesy of The Skin Cancer Foundation, New York, NY. [www.skincancer.org](http://www.skincancer.org)